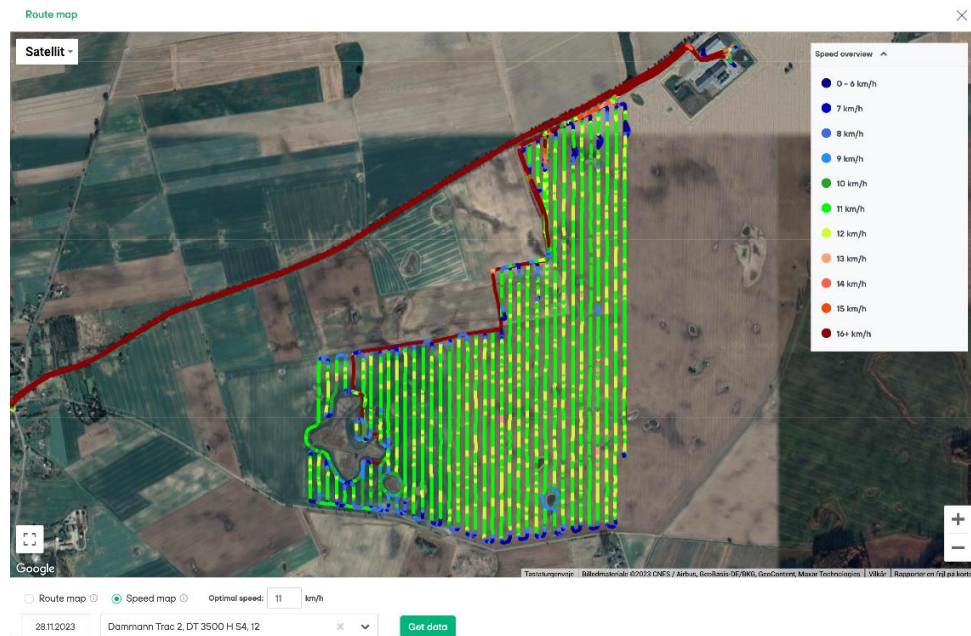


Presentation GPS tracking system made by FarmBackup



"FarmBackup has developed a user-friendly GPS tracking system designed for mixed fleets, enabling the tracking of both vehicles and implements. This system automatically distinguishes between transportation and fieldwork, allocating time to specific fields to assist in calculating profit or loss (DB2). In addition to cost analysis at field level, it provides a speed map showing the pace of work completion and the volume of work accomplished on a given day.

The company CM Agropol, a member of the DFA, has recently initiated using this system and has agreed to share insights in the videos below:"

Vedhæftet billede er et screenshot fra de videogennemgange man kan se her:

English video tour of FarmBackup – use the link to start the video

<https://www.loom.com/share/40defa9c2cc74d58847cf0855cfa1a3d?sid=107c6f0e-da2c-41fe-9a71-bfe8b59c6ec7>

DK version:

Dansk videogennemgang af FarmBackup – use the link to start the vido

<https://www.loom.com/share/93f2df6ba3544239b379d598931fcf38?sid=22b3bffc-69f2-4b46-8fdf-7253ea5c957f>

Nærmere info:

Kontakt: Anders Knudsen, Co-founder, FarmBackup, Tlf: +45 25 94 39 91; Mobile : +45 29 84 51 24

Web: farmbackup.com